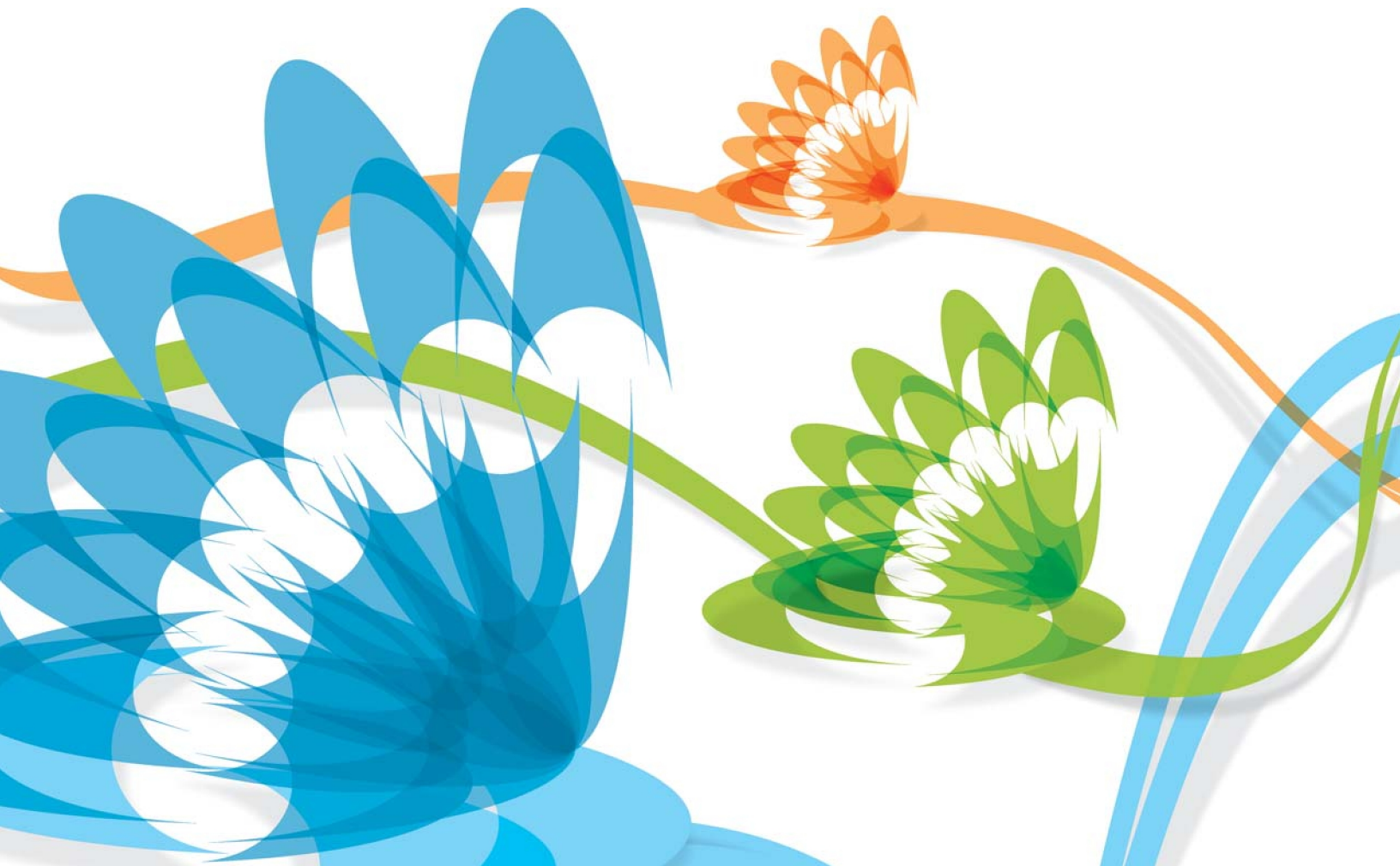


# PRINTSHOP MAIL SUITE



PrintShop Mail Web  
Authorize.net



## Copyright Information

Copyright © 1994-2010 Objectif Lune Inc. All Rights Reserved.

No part of this publication may be reproduced, transmitted, transcribed, stored in a retrieval system, or translated into any other language or computer language in whole or in part, in any form or by any means, whether it be electronic, mechanical, magnetic, optical, manual or otherwise, without prior written consent of Objectif Lune Inc.

Objectif Lune Inc. disclaims all warranties as to this software, whether expressed or implied, including without limitation any implied warranties of merchantability, fitness for a particular purpose, functionality, data integrity or protection.

PlanetPress and PrintShop Mail are registered trademarks of Objectif Lune Inc.

PostScript and Acrobat are registered trademarks of Adobe Systems Inc.

Pentium is a registered trademark of Intel Corporation.

Windows is a registered trademark of Microsoft Corporation.

Adobe, Adobe PDF Library, Adobe Acrobat, Adobe Distiller, Adobe Reader, Adobe Illustrator, Adobe Photoshop, Optimized Postscript Stream, the Adobe logo, the Adobe PDF logo are either registered trademarks or trademarks of Adobe Systems Incorporated in the United States and/or other countries.

Trademarks of other companies mentioned in this documentation appear for identification purposes only and are the property of their respective companies.

Title	PrintShop Mail Web - Authorize.net
Revision	2010/01/04

<b>1 Introduction .....</b>	<b>1</b>
<b>2 Authorize.net.....</b>	<b>2</b>
2.1 Requirements .....	3
2.2 Configuring the Authorize.net module.....	4
2.3 Test mode.....	5
2.4 AVS and CCV checks .....	6
2.5 Payment page .....	7



## **1 Introduction**

Payment modules allow your store to communicate with merchant banks to transfer money following a sale. Payment modules allow you to collect money following a sale. With the introduction of PrintShop Mail Web 7 administrators can install additional payment module. Payment modules require a Business To Consumer license on the PSM Web dongle.

Authorize.net is a payment gateway service provider for merchants in the USA. The Authorize.net payment module for PSM Web uses the Advanced Integration Method (AIM) for Card Not Present Transactions.



## **2 Authorize.net**

The workflow for a shop owner to add Authorize.net to his webshop is the following:

1. Apply for an Authorize.net account
2. Configure the account on the Authorize.net website
3. Add the Authorize.net payment connector to PSM Web
4. Configure the Authorize.net payment connector

The following sections will guide you through this process and explain how to configure the module.

## 2.1 Requirements

Please ensure that the following requirements have been met before using the payment connector:

1. **Installation:** The installation consists of the following steps:
  - Install PrintShop Mail Web 7.0 or upgrade to this version.
  - Configure PSM Web by completing the First Run Wizard.
  - Install the payment module as described in the PSM Web - Administrator Guide.
2. **Licensed B2C module:** You must have a licensed Business To Consumer (B2C) module on the PSM Web dongle in order to use the payment module in your production environment.
3. **Authorize.net account:** You must have a Authorize.net account.
4. **Set up pricing in PSM Web:** Set up pricing for your customers and their documents.
  - Enable pricing for your document(s) and define the volume discount table for them (required for price calculations)
  - Assign the payment module(s) to the appropriate companies

## 2.2 Configuring the Authorize.net module

After the installation of a payment module you will need to configure it. To configure the module:

1. Launch your web browser and log in to PSM Web using an administrator account.
2. Select *Settings* in the menu bar.
3. Click *Overview* in the *Modules* section (*Settings* side menu). The *Modules Overview* page is shown.
4. Click the plus-symbol next to the *Payment Modules* group to view the installed payment modules.
5. Click *Authorize.net* to view the settings of the module.
6. Click *Edit*. The *Edit Properties* page appears.

Edit properties pages

7. The following configuration options must be configured:
  - **Gateway:** Radio group field with the following options:
    - *Test* use this setting to use the Test gateway
    - *Live* use this setting to use Live gateway
  - **Test URL:** the URL to the Test gateway
  - **Live URL:** the URL to the Live gateway
  - **Transaction Type:** Radio group with the following options (see [Test mode \(Page 5\)](#)):
    - *Test* use this mode to set testing mode
    - *Live* use this mode to disable testing mode
  - **API Login ID:** the Login ID for the account being used
  - **Transaction Key:** the Transaction Key for the account being used
  - **Order Description Prefix:** the contents of this field is combined with the order id to create the Order Description for Authorize.net
  - **Check for AVS:** enables AVS (Address Verification) checking where individual AVS checks may be enabled and disabled. See [AVS and CCV checks \(Page 6\)](#) for more information.
  - **Check for CCV:** enables CCV (Credit Card Verification) checking where individual CCV checks may be enabled and disabled. See [AVS and CCV checks \(Page 6\)](#) for more information.
8. Click **Save** to store the changes.

## 2.3 Test mode

With a Developer account the test mode setting will influence the response codes generated by Authorize.net. If the test mode is enabled the amount of the order will determine which response code will be returned by the payment gateway and if the transaction will be successful or not. If you set the test mode off all transactions will succeed no matter what the amount is. Please note that the AVS and CCV options should be unchecked as a Developer account does not support these options. Using the test mode the response codes that AVS and CCV can generate can be simulated by varying the payment amounts. Please refer to the [Merchant Integration Guide](#) of Authorize.net for more details

With a Live account the test mode setting will only allow an authorization request to succeed but will never actually debit any money from the credit card. This mode is useful to check AVS and CCV options. Please note that the transaction number will always be 0 and the payment will never succeed. Authorization requests done with this setting will have to be manually cancelled (voided) using the Authorize.net account pages.



## 2.4 AVS and CCV checks

If you are planning on using AVS (Address Verification) and/or CCV (Credit Card Validation) checks it's important to configure your Authorize.net account correctly.

The AVS and CCV checks are additional; this means that those checks could fail but you could still have a successful transaction. In the Authorize.net account you can specify which response you would allow. It's important to allow all responses in this account and to limit the responses in the Authorize.net payment module settings in PSM Web.

If the Authorize.net account is configured to reject certain AVS/CCV responses those payments are not automatically voided. The merchant should void them using the Authorize.net account site. Therefore it's better to accept all responses on the account site and configure PSMW to reject certain responses. That way PSM Web will first do an authorization request and if the AVS/CCV fails it will then automatically do a void to release the funds on the credit card.

Please note that with a developer test account you can't test AVS/CCV responses

## 2.5 Payment page

The payment page for the Authorize.net module varies based on the AVS and CCV settings of the module.

PrintShop Mail Web: Authorize.Net - Mozilla Firefox

File Edit View History Bookmarks Tools Help SourceForge localhost PrintShop Web

http://localhost/site.php?formid=checkout\_summary\_form

PrintShop Mail Web: Authorize.Net

**PRINTSHOP MAIL WEB**

PSNW administrator administrator My Account Log off English

Home New Document Order Manager Checkout Companies Users Publication Types Collections Settings

Order Manager » Order ID 121: » Authorize.Net Payment

Payment Number of items in your cart: 0

**Enter credit card details**

**Order details**

Order ID: 121  
Total price: EUR 2.00

**Credit Card**

Credit card number: \* 422222222222  
Credit card expiration date (MMYY): \* 1209

**Address Verification**

Address: \* Heerenweg 78  
ZIP code: \* 6414 AP

**CCV (3/4-digit card code verification)**

CCV: \* 123

Proceed

Done 6 errors / 1 warning

### *The payment page*

The AVS setting controls whether the address fields will be shown. When AVS is enabled the address fields will be shown and will be preset based on the billing address. The CCV setting controls whether the CCV field is shown.