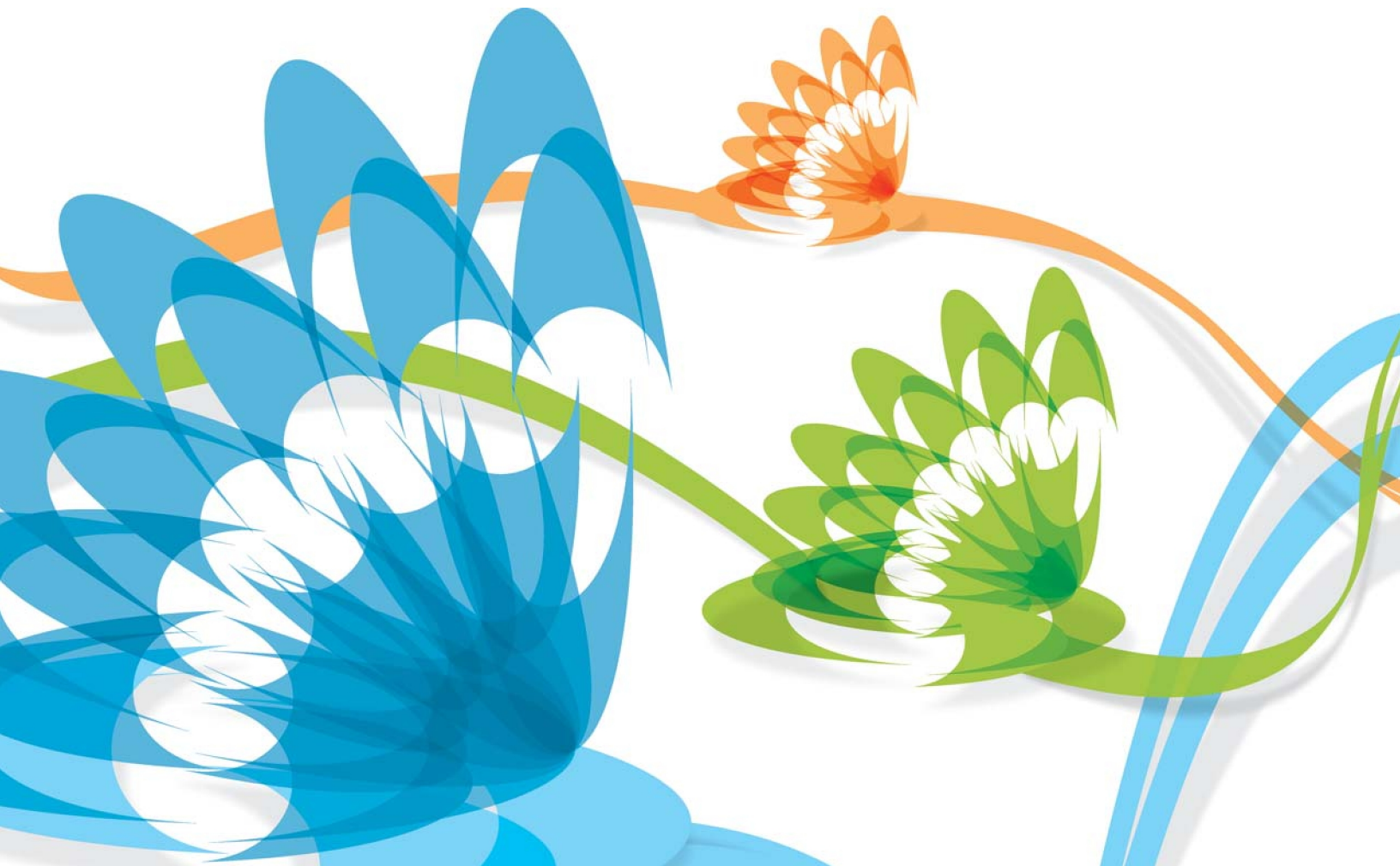


PRINTSHOP MAIL SUITE



PrintShop Mail Web
PayPal Standard



Copyright Information

Copyright © 1994-2010 Objectif Lune Inc. All Rights Reserved.

No part of this publication may be reproduced, transmitted, transcribed, stored in a retrieval system, or translated into any other language or computer language in whole or in part, in any form or by any means, whether it be electronic, mechanical, magnetic, optical, manual or otherwise, without prior written consent of Objectif Lune Inc.

Objectif Lune Inc. disclaims all warranties as to this software, whether expressed or implied, including without limitation any implied warranties of merchantability, fitness for a particular purpose, functionality, data integrity or protection.

PlanetPress and PrintShop Mail are registered trademarks of Objectif Lune Inc.

PostScript and Acrobat are registered trademarks of Adobe Systems Inc.

Pentium is a registered trademark of Intel Corporation.

Windows is a registered trademark of Microsoft Corporation.

Adobe, Adobe PDF Library, Adobe Acrobat, Adobe Distiller, Adobe Reader, Adobe Illustrator, Adobe Photoshop, Optimized Postscript Stream, the Adobe logo, the Adobe PDF logo are either registered trademarks or trademarks of Adobe Systems Incorporated in the United States and/or other countries.

Trademarks of other companies mentioned in this documentation appear for identification purposes only and are the property of their respective companies.

Title	PrintShop Mail Web - PayPal Standard
Revision	2010/01/04

1 Introduction	1
2 PayPal.....	2
2.1 Requirements	3
2.1.1 Instant Payment Notifications.....	3
2.2 Configuring the module	4
2.3 The PayPal Sandbox.....	5
2.3.1 Creating a PayPal Sandbox Access account.....	5
2.3.2 Creating a PayPal Sandbox Seller test account.....	6
2.3.3 Creating a PayPal Sandbox Buyer test account	7
2.4 Processing orders.....	8



1 Introduction

Payment modules allow your store to communicate with merchant banks to transfer money following a sale. Payment modules allow you to collect money following a sale. With the introduction of PrintShop Mail Web 7 administrators can install additional payment module. Payment modules require a Business To Consumer license on the PSM Web dongle.

Why use PayPal?

PayPal is an easy, cheap way for you to deliver secure checkout to your customers. You can accept credit card payments, eChecks, and PayPal transfers from the millions of people already signed up to use PayPal. There is even a service that lets your customers who do not have PayPal accounts pay by credit card through the PayPal server. PayPal is a great payment solution for small businesses and is a good option for larger ones, too. It's fast, easy, and secure.

PayPal payments are immediate and accepted worldwide. The PayPal module for PSM Web integrates PayPal Website Payments Standard. In the PSM Web checkout process customers are redirected to PayPal after reviewing their order to complete payment; they return to your PSM Web site once payment is completed.



2 PayPal

In order to use PayPal as your payment solution, you must have a PayPal account. Signing up is really simple via the [PayPal](#) web site. Once you have signed up, you need to verify your account and upgrade to a Premier or Business Account depending on the service you wish to use. Consult the appropriate documentation and customer service on their website.

We suggest to install the PayPal module on your PSM Web server and familiarize yourself with its functionalities using the PayPal sandbox (a test environment facilitated by PayPal).

The following sections will guide you through this process and explain how to configure the module.

2.1 Requirements

Please ensure that the following requirements have been met before using the payment connector:

1. **Installation:** The installation consists of the following steps:
 - Install PrintShop Mail Web 7.0 or upgrade to this version.
 - Configure PSM Web by completing the First Run Wizard.
 - Install the payment module as described in the PSM Web - Administrator Guide.
2. **Licensed B2C module:** You must have a licensed Business To Consumer (B2C) module on the PSM Web dongle in order to use the payment module in your production environment.
3. **PayPal account:** Sign up with PayPal for a Business account, the details provided by PayPal are required to configure the PayPal connector for PrintShop Mail Web.
4. **Public IP address:** Your website must be reachable from the internet on port 80 (when using HTTP) or port 443 (when using HTTPS). When you are using a router/firewall the port must be added and routed to your local ip-address. In the web browser you need to enter the real domain name or public ip address of the PSM Web website (localhost will not work). This is required for Instant Payment Notification (see the Instant Payment Notification section).
5. **Set up pricing in PSM Web:** Set up pricing for your customers and their documents.
 - Enable pricing for your document(s) and define the volume discount table for them (required for price calculations)
 - Assign the payment module(s) to the appropriate companies

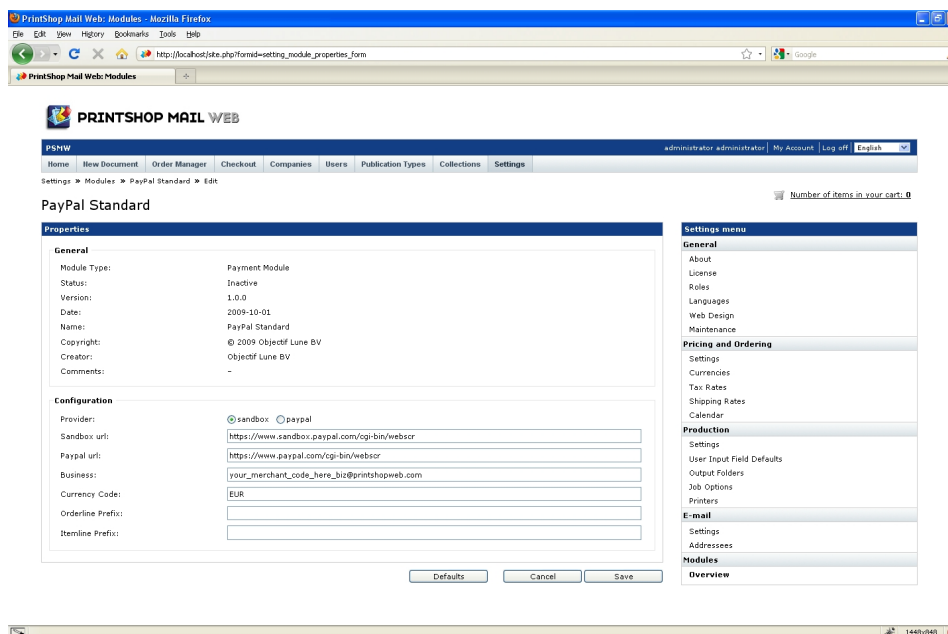
2.1.1 Instant Payment Notifications

The PayPal module is setup to accept Instant Payment Notifications (IPN) from PayPal. This means that any time someone completes an order using PayPal, your site will receive a confirmation message from PayPal that PSM Web uses to verify completed payments. When an IPN is received, its data is verified and the payment is then logged to the appropriate order. The Transaction ID is logged to the order and displayed for your customers to review any time they log into their accounts and check their order histories.

2.2 Configuring the module

After the installation of a payment module you will need to configure it. To configure the module:

1. Launch your web browser and log in to PSM Web using an administrator account.
2. Select *Settings* in the menu bar.
3. Click *Overview* in the *Modules* section (*Settings* side menu). The *Modules Overview* page is shown.
4. Click the plus-symbol next to the *Payment Modules* group to view the installed payment modules.
5. Click *PayPal Standard* to view the settings of the module.
6. Click *Edit*. The *Edit Properties* page appears.



The Edit Properties page

7. You can change the following parameters:
 - **Provider:** If you plan to test the connector using the PayPal Sandbox site you will need to select *sandbox*, select *paypal* to use the 'live' PayPal site.
 - **Sandbox url:** The URL to the PayPal Sandbox site
 - **Paypal url:** The URL to the live PayPal site
 - **Business:** this is the identifier of your PayPal account, provided to you by PayPal. When testing the module with the PayPal Sandbox you should enter the e-mail address of the *Business* test account.
 - **Currency Code:** Make sure that the currency code matches the default currency set for PrintShop Mail Web. Examples are:
 - AUD: Australian Dollars
 - CAD: Canadian Dollars
 - EUR: Euros
 - GBP: Pounds Sterling
 - JPY: Japanese Yen
 - USD: United States Dollars
 - **Orderline Prefix:** The entered text is added before PayPals standard order line.
 - **Itemline Prefix:** The entered text is added before PayPals standard item lines.
8. Click *Save* to store the changes.

2.3 The PayPal Sandbox

The PayPal Sandbox is a testing environment that is a duplicate of the live PayPal site, except that no real money changes hands. The Sandbox allows you to test the integration with PrintShop Mail Web before submitting transactions to the live PayPal environment. The Sandbox allows you to create and manage test accounts, and view emails for those test accounts.

You can sign up for a test account via the following url: <https://developer.paypal.com/>

Detailed information can found in the [PayPal Sandbox User Guide](#).

In order to test the integration you will need the following accounts:

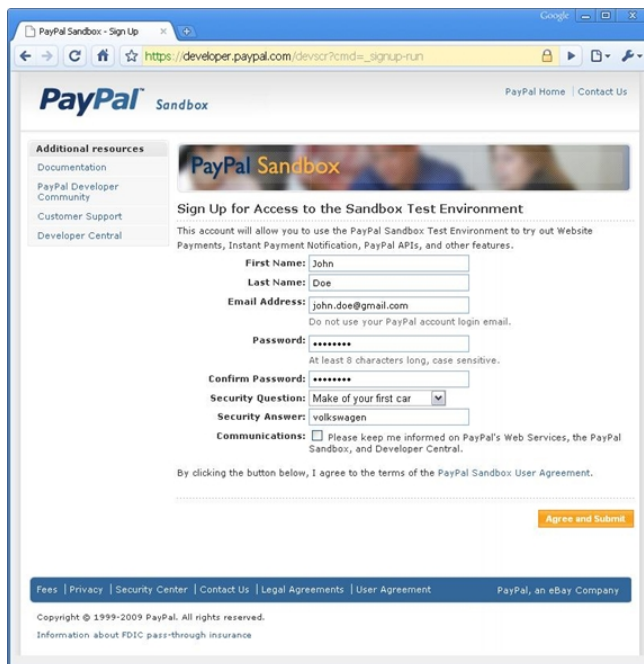
- You personal PayPal Sandbox Access Account (using your own e-mail address)
- A PayPal Sandbox seller/business test account. This account represents the owner of PSM Web.
- A PayPal Sandbox buyer/personal test account. This account represents the visitor of the PMS Web website (your customers).

The following section will guide through the process of creating these accounts.

2.3.1 Creating a PayPal Sandbox Access account

This account will allow you to use the PayPal Sandbox Test Environment to try out online Payments, Instant Payment Notification and other features. To sign up for a PayPal Sandbox Access account:

1. Launch your webbrowser and enter the following URL: <https://developer.paypal.com/>
2. Click *Sign Up Now*.
3. Complete the web form. Use your 'real' contact information and e-mail address.



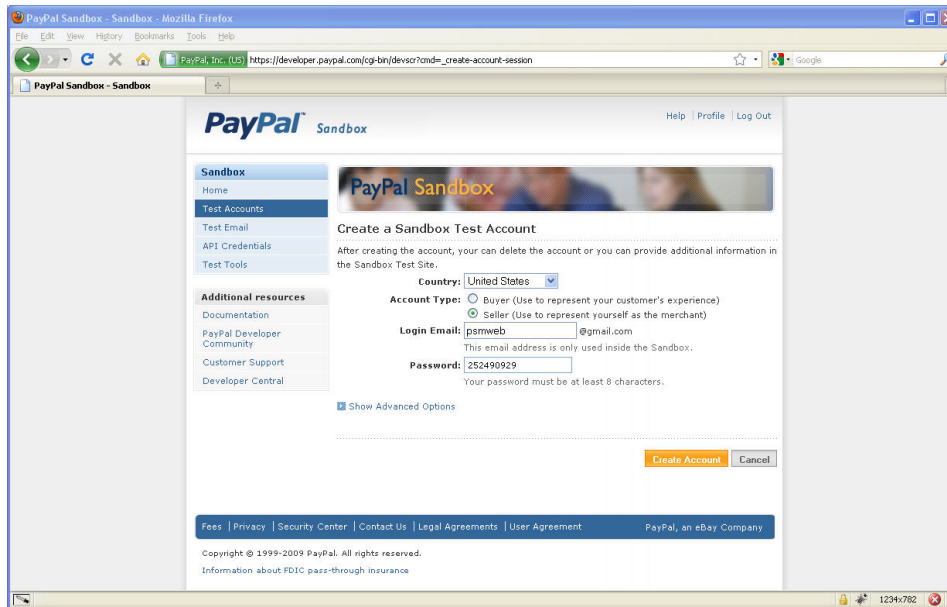
Sign up for the Access account

4. Click *Agree and Submit*. Instructions on how to activate the account are send by e-mail.
5. Click the activation link in the e-mail message.

2.3.2 Creating a PayPal Sandbox Seller test account

To create a PayPal Sandbox Seller account:

1. Launch your web browser and enter the following URL:
<https://developer.paypal.com/>
2. Enter your credentials and click *Login*.
3. Click the *Test Accounts* link.
4. Click the *Preconfigured* link in the *Create Account* section. The *Create a Sandbox Test Account* page appears:



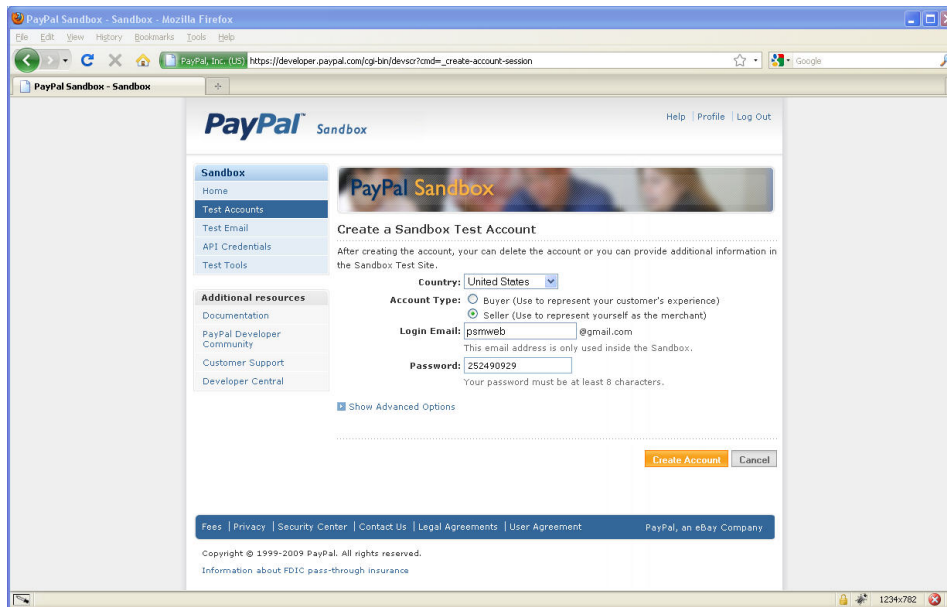
The Create a Sandbox Test Account page

5. Select the *Seller* as the Account Type
6. Click *Create Account*. The *Test Accounts* page appears. This page shows the newly created account. The *Type* column states *Business*.

2.3.3 Creating a PayPal Sandbox Buyer test account

To create a PayPal Sandbox Seller account:

1. Launch your web browser and enter the following URL:
<https://developer.paypal.com/>
2. Enter your credentials and click *Login*.
3. Click the *Test Accounts* link.
4. Click the *Preconfigured* link in the *Create Account* section. The *Create a Sandbox Test Account* page appears:



The Create a Sandbox Test Account page

5. Select the *Buyer* as the Account Type
6. Click *Create Account*. The *Test Accounts* page appears. This page shows the newly created account. The *Type* column states *Personal*.

2.4 Processing orders

To process an order via PayPal:

PayPal Sandbox

When testing the integration with the *PayPal Sandbox* the following requirements should be met:

1. Before making a payment you must first login to the PayPal developer/sandbox site using the same browser that is used to create and pay for the order. This can be achieved by opening a separate browser window or tab. Navigate to <https://developer.paypal.com/> and login using your PayPal Sandbox Access account (typically this is your *real* e-mail address). Leave this window/tab open after logging in.
2. Navigate to PSM Web using a different window or tab and use the production domain or public IP of your PSM Web server. *Do not use localhost*. PayPal tries to communicate with your PSM Web website, this will not work when using the *localhost* domain.

Payment process

1. Log in to PSM Web and add one or multiple documents to your shopping cart. Make sure that you enabled pricing for these documents, that you have setup a volume discount table and that the payment connector is assigned to the company of the current user. Walk through the steps of the ordering process and click *Pay* on the order summary page. This redirects you to the PayPal website.
 - PayPal does not accept orders that does not have a value (0.00).
 - In case you are testing using the PayPal Sandbox the website will be redirected to the PayPal Sandbox website.
2. Enter the credentials of a PayPal Seller account to pay for the order.
 - When testing the integration using the PayPal Sandbox use the credentials of PayPal Sandbox Seller account.

Robbie Gieze's Test Store

Online Print Order ID: 14 Total: €1.10 EUR

Pay with Credit Card or Log In

Learn more about PayPal - the safer, easier way to pay.

Enter your billing information

Country: United States

Credit Card Number: 417395489717916

Payment Type: VISA

Expiration Date: 12/20 12/20 CSC 000 What's this?

First Name:

Last Name:

Billing Address Line 1:

Billing Address Line 2 (optional):

City:

State:

ZIP Code:

Home Telephone:

Email:

Review Order and Continue

Already have a PayPal account?

Please log in

Email: robbie_1251807790_per@gieze.cc

Password:

Log In

Forgot email address or password?

PayPal. The safer, easier way to pay.

For more information, read our [User Agreement](#) and [Privacy Policy](#).

[Fees](#) | [Privacy](#) | [Security Center](#) | [Contact Us](#) | [User Agreement](#)

PayPal, an eBay Company

Copyright © 1999 - 2009 PayPal. All rights reserved.

[Information about FDIC pass-through insurance](#)

The PayPal Login page

3. Click *Login*. The *Review* page appears.
4. Review the information and click *Pay Now*. The *Thank You* page is shown.

Robbie Gieze's Test Store

Review your payment

If the information below is correct, click **Pay Now** to complete your payment.
[View PayPal policies](#) and your payment source rights.

Description	Unit Price	Quantity	Amount
Online Print Order ID: 14 Item # Job ID: 17	€1.10	1	€1.10
Add special instructions to merchant			Item total: €1.10
			Total: €1.10 EUR
Enter gift certificate, reward, or discount			

Payment Method: Instant Transfer : Chase Manhattan Checking (Confirmed) \$1.54 USD
 xxxxxx4283
 PayPal will use Visa XXXX-XXXX-XXXX-1514 to fund this transaction if your bank does not have enough funds.
 PayPal Conversion Rate as of Sep. 1, 2009: 1 U.S. Dollar = 0.714485 Euros
[Change](#)

Ship to: Test User
 1 Main St
 San Jose, CA 95131
 United States
[Change](#)

Contact Information: robbie_1251807790_per@gieze.com

Pay Now

PayPal. The safer, easier way to pay.
 For more information, read our [User Agreement](#) and [Privacy Policy](#).

The PayPal order Review page

5. Click *Return* to return to the PSM Web website. This shows the *Thank You* page in PSM Web.
6. Click *Order Manager* in the menu bar to view your order in the *Approved* basket. The payment status is set to *paid*. If the payment failed or is aborted you should see the order in the *My Orders* folder, the payment status is set to *Pending*.