



**OL<sup>®</sup> Update Manager**

# Upgrade Guide

# Update Manager

## Upgrade Guide for version 1.5

Last Revision 2022-04-08

Objectif Lune, Inc.  
2030 Pie-IX, Suite 500  
Montréal, QC, Canada, H1V 2C8

+1 (514) 875-5863

[www.objectiflune.com](http://www.objectiflune.com)

© 2022 Objectif Lune Incorporated. All rights reserved.

No part of this documentation may be reproduced, transmitted or distributed outside of Objectif Lune Inc. by any means whatsoever without the express written permission of Objectif Lune Inc.

Objectif Lune Inc. disclaims responsibility for any errors and omissions in this documentation and accepts no responsibility for damages arising from such inconsistencies or their further consequences of any kind.

Objectif Lune Inc. reserves the right to alter the information contained in this documentation without notice.

# Table of Contents

<b>Introduction</b> .....	<b>4</b>
What is the OL Update Manager? .....	4
What's new in Update Manager 1.5? .....	4
What's new in Update Manager 1.4? .....	4
What's new in Update Manager 1.3? .....	5
<b>Upgrading the Update Manager</b> .....	<b>6</b>
Do I need to upgrade my Update Manager to version 1.5? .....	6
Upgrading on machines with internet access .....	7
Upgrading on machines without internet access .....	9
<b>Known Issues</b> .....	<b>10</b>
Issue with OL Update Manager 1.4 when updating to OL Connect 2021.2 standalone .....	10
The OL Connect license update does not cater for existing AFP input licenses .....	10
OL Update Manager does not cater for older standalone Connect Print Manager installations .....	10

# Introduction

## What is the OL Update Manager?

The **OL** Update Manager (previously referred to as the *Upgrade Client*) is a tool that allows dynamic updating of Objectif Lune Inc. software products. The Update Manager compares currently installed OL products against the versions available on the OL Server that hosts OL product installations. If an updated version of an OL product that you have installed becomes available on the Server, then the Update Manager will prompt you to upgrade that OL product to the newer version. This way you can always be kept up to date.

If the Update Manager product itself has itself been updated since it was last installed, then it will appear as an update option (as *Update Client*).

The Update Manager is designed to work with the newer **OL Connect** and **OL Connect Workflow** products, as well as the OL Classic products **PlanetPress Suite** and **PrintShop Mail Suite**.

The Update Manager itself is installed along with those products as part of their installation process.

## What's new in Update Manager 1.5?

The Update Manager was modified in preparation for the release of PReS\PlanetPress and PrintShop Mail Connect 2022.1 to cater for an updated Connect installer that requires different back-end version management. (SHARED-85744)

## What's new in Update Manager 1.4?

The main improvements introduced in this version are:

- Update Manager 1.4 has been upgraded to support the more secure industry standard **TLS 1.2**. (SHARED-84161)
- Fixed issues with the progress bar, so it now better reflects the status of both file download and product installation. (SHARED-79336)

# What's new in Update Manager 1.3?

The main improvements introduced in this version are listed here:

- Update Manager 1.3 uses the more secure **HTTPS** protocol when communicating with the OL Update Server. (SHARED-71529)
- The Update Manager now updates customer licenses from the OL Update Server whenever it is run, whether run manually or when automatically scheduled. (SHARED-72188)
- Messaging improved, to make the application more user friendly. (SHARED-72191)

# Upgrading the Update Manager

## Do I need to upgrade my Update Manager to version 1.5?

**YES.** If you are an **OL Connect** or **OL Connect Workflow** user, and you wish to update either of those products to version 2022.1 or later.

Update Manager 1.5 is a prerequisite for both OL Connect and OL Connect Workflow installations as of version 2022.1.

For details on the update procedure, please refer to the section that applies to your situation:

- "Upgrading on machines with internet access" on page 7
- "Upgrading on machines without internet access" on page 9

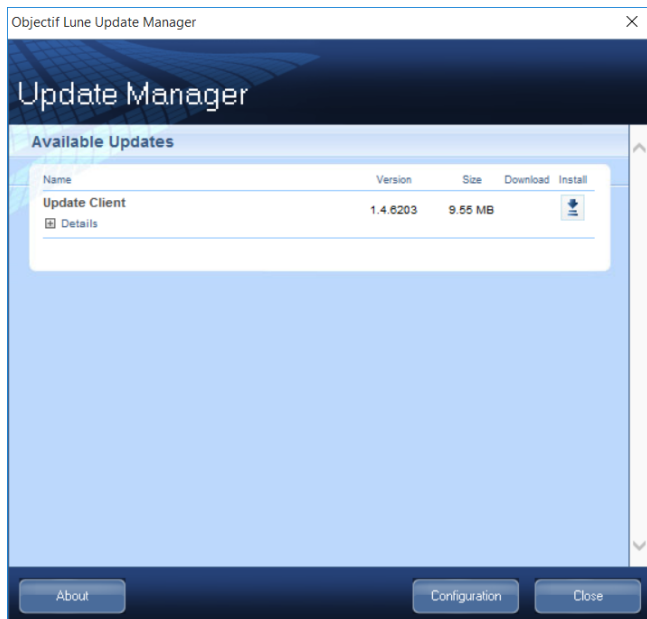
**NO.** For customers using OL Classic products like **PlanetPress Suite** and **PrintShop Mail Suite**, it is not *necessary* to upgrade the Update Client to version 1.5. The previous version of the Update Manager will continue to operate and display any updates for these products as they become available.

But by the same token, *we recommend upgrading* as Update Manager version 1.5 uses more contemporary and robust security protocols.

For information on upgrading from an OL Classic product to OL Connect, please contact your local OL Sales team. [Click here](#) for your local office contact details.


# Upgrading on machines with internet access

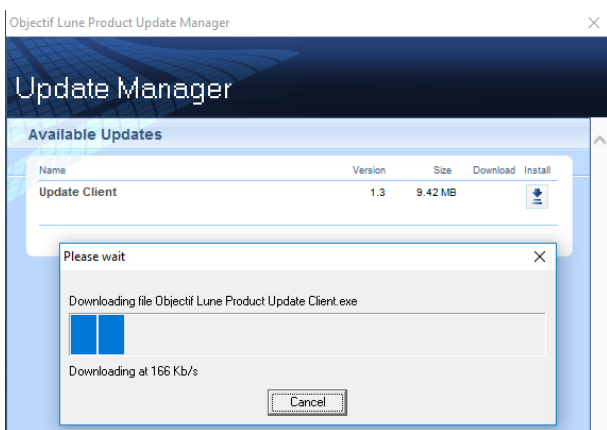
The next time you run the Update Manager you will find an update for the Update Client (aka the *Update Manager*) itself, as seen in the following screen-shot.



At the time of publication the version available for installation would be 1.5.6557.

Use these following steps to upgrade the Update Manager tool.

1. Click on the “Install” icon  to initiate the update. This starts the Update Manager download.



Once Update Manager 1.5 is downloaded the upgrade installation will begin. Follow the installation prompts until the software is installed.

2. The Update Manager checks for license updates each time it is run, whether run manually or when scheduled to automatically run. If a license update is required then the Update Manager will prompt you to update your license.

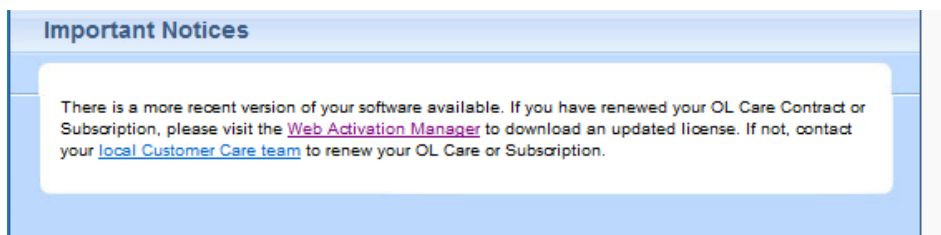
Select **Yes** to update your license to the newer version.

Select the **Always agree** checkbox to remove the message box prompt and automatically update the license whenever required.

What options the Update Manager provides hereafter will be determined by whether or not the license is still covered by a current OL Care subscription.

The two options are:

- For those **with** a current OL Care subscription, the Update Manager will provide links to the most recent Connect and Workflow installations. These can be downloaded and installed, as per the usual sequence. At the time of publication this version would be Connect 2021.2.
- For those **without** a current OL Care subscription the Update Manager will display a message in the **Important Notices** area suggesting that you either contact your local [Customer Care team](#) to renew your subscription or visit the [Web Activation Manager](#) to download your updated license.



Use your OL Connect Customer Number and password combination to login to the [Web Activation Manager](#) site to obtain your new license. If you've forgotten your Customer Number, you can use the current Connect license Serial Number (found using the **Connect Software Activation** tool) and your Email details instead.

If issues arise, or if you need to renew your OL Care subscription, please contact your local [Customer Care team](#).



# Upgrading on machines without internet access

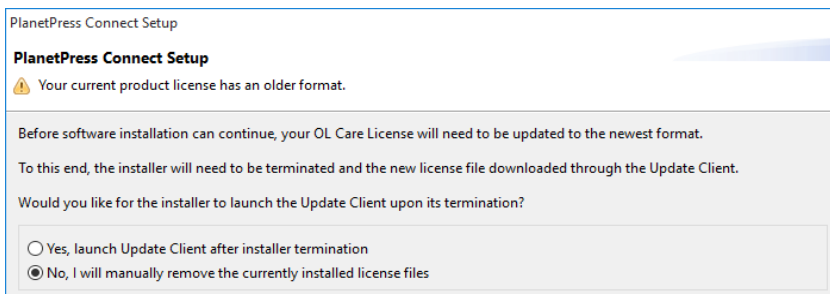
If you are running OL Connect/Workflow 2018.2 or earlier in an Internet secure environment (such as a bank or government organization) then upgrading Connect via the Update Manager will not be an option for you. Instead the latest OL Connect/Workflow installers will be supplied to you by the Objectif Lune Support team.

Once you have received the latest OL Connect/Workflow installers (Connect 2021.2 at the time of publication) you must do the following:

1. Ask your Administrator to contact your local [Customer Care team](#) to provide you with a replacement license in the new format.
2. Once you have obtained your new OL Connect license, you must then apply it.
3. Once the new license is applied it, you should be able to install OL Connect/Workflow.

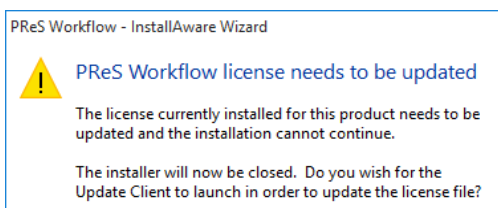
If you do not install the new OL Connect license prior to running the OL Connect/Workflow installer, the installer will warn you that you first need to do so, as shown in the following examples.

- In this example PlanetPress Connect is warning that the license is of the older format:



Select the **"No, I will manually remove the currently installed license file"** option, then select the installation **"Finish"** option, apply the updated license and retry the Installation.

- In this example PReS Workflow is warning that the license is of the older format:



Select **"No"** to exit the installation, apply your updated OL Connect license and then retry the installation.

# Known Issues

## Issue with OL Update Manager 1.4 when updating to OL Connect 2021.2 standalone

When using Update Manager 1.4 to update a standalone OL Connect installation (no Workflow installed) to v2021.2 from earlier versions, the OL Connect installation will remove Update Manager 1.4 and will re-install the older Update Manager version 1.3.

If this occurs you will need to re-update the Update Manager to version 1.4 (or later) to have full access to future versions of Connect.

## The OL Connect license update does not cater for existing AFP input licenses

**AFP Input** is an add-on option for OL Connect licenses. Unfortunately, the update to the latest version of the OL Connect license does not cater for existing AFP input licenses.

If you have an existing AFP input license we ask that you contact your [local Customer Care team](#) after the initial license update is complete and have them add the AFP input option back into your license.

## OL Update Manager does not cater for older standalone Connect Print Manager installations

The **Connect Print Manager** is a standalone Connect tool that is used in production sites to manage print jobs. It comes bundled with PReS Connect and PrintShop Mail Connect. The Print Manager can be installed and run on standalone machines without requiring a Connect license. Update Manager 1.5 looks for a Connect license as part of the Connect update process, but it will not find one on standalone Print Manager installations. As a result the Update Manager will not recognize that there is a Print Manager update available.

In order to update Connect Print Manager from version 2018.x or earlier you will first need to download the Connect installer from outside of the Update Manager. The Connect installer can be downloaded from the [Web Activation Manager](#) site, or you could ask your local Administration for the installer, as it would likely already have been downloaded for installation by the document designers.