



Installation and Activation Guide

Version: 1.3.0

PReS[®] Connect

OL™ Software

Installation and Activation Guide

Version 1.3.0

Last Revision: 2016-02-04

Objectif Lune, Inc.

2030 Pie-IX, Suite 500

Montréal, QC, Canada, H1V 2C8

+1 (514) 875-5863

sales@ca.objectiflune.com

www.objectiflune.com

© Objectif Lune, Inc. 1994-2016

All trademarks displayed are the property of their respective owners.

Table of Contents

Table of Contents	3
System Requirements	5
Operating System (64-bit only)	5
Minimum Hardware Requirements	5
Environment considerations	6
VMWare Support	6
Terminal Server/Service	6
Remote Desktop	6
64-bit Operating Systems	6
Antivirus Considerations	6
Windows Search Indexing Service	7
Database Considerations	8
Using the MySQL Instance from the Installer	8
Using your own MySQL Instance	8
Network considerations	9
Language and Encoding considerations	10
Performance Considerations	11
Performance Analysis Details	11
High-Performance Server Hardware	12
Installation and Activation	14
Installation Pre-Requisites	15
Updating to PReS Connect 1.2 via the Update Manager	15
Installing PReS Connect on Machines without Internet Access	15
Installation Wizard	17
Starting the PReS Connect installer	17
Selecting the required components	17

Selection Confirmation	18
End User License Agreement	18
MySQL Configuration	18
PReS Connect Server/Server Extension Configuration	19
Completing the installation	20
The Product Update Manager	20
Product Activation	21
Information about PReS Workflow 8	22
Activating a License	23
Obtaining the PReS Connect Magic Number	23
Requesting a license	24
Activating PReS Workflow 8	24
Activating PReS Connect	24
Migrating to a new computer	26
User accounts and security	27
Permissions for PReS Connect Designer	27
Permissions for PReS Connect Server	27
Legal Notices and Acknowledgements	28

System Requirements

These are the system requirements for PReS Connect1.3.0

Operating System (64-bit only)

- Microsoft Windows 2008/2008 R2 Server
- Microsoft Windows 2012/2012 R2 Server
- Microsoft Windows Vista
- Microsoft Windows 7
- Microsoft Windows 8.1
- Microsoft Windows 10

Windows XP, Windows 2003 and older versions of Windows are not supported by PReS Connect.

Minimum Hardware Requirements

- NTFS Filesystem (FAT32 is not supported)
- CPU Intel Core i7-5960X @ 3.00GHz (8 core with Hyper-Threading)
- 16GB RAM
- Disk Space: At least 10GB (20GB recommended)

For tips and tricks on performance, see [Performance Considerations](#)

Environment considerations

VMWare Support

PReS Connect supports VMWare Workstation, VMWare Server, VMWare Player and VMWare ESX infrastructure environments as software installed on the Guest operating system. PReS Connect does not officially support VMotion under ESX at the moment.

Copying (duplicating) your VMWare Guest Machine and using it simultaneously constitutes an infringement of our End-User License Agreement.

While VMWare ESX, Workstation, Server and Player (from [VMWare, Inc.](http://www.vmware.com)) are supported, other virtual environments (such as Microsoft Virtual PC, Parallels, Xen and others) are not supported at this time.

Terminal Server/Service

PReS Connect does not support Terminal Server (or Terminal Service) environment as possible under Windows 2000, 2003 and 2008. This is to say, if Terminal Service is installed on the server where PReS Connect is located, unexpected behaviours may occur and will not be supported by Objectif Lune Inc.. Furthermore, using PReS Connect in a Terminal Service environment is an infringement of our End-User License Agreement.

Remote Desktop

Tests have demonstrated that you can use PReS Connect through Remote Desktop. It is however possible that certain combination of OS could cause issues, if you encounter any please contact Support and we will investigate.

PReS Connect 1.3 and above have been certified under Remote Desktop.

64-bit Operating Systems

PReS Connect is a 64-bit software and can only be installed on 64-bit operating systems.

Antivirus Considerations

- Antivirus software may slow down processing or cause issues if they are scanning in temporary folders or those used by PReS Connect. Please see [KB-002: Antivirus Exclusions](#) for more information.
- Antivirus software might interfere with installation scripts, notably a vbs script to install fonts. McAfee, in particular, should be disabled temporarily during installation in order for MICR fonts to install and the installation to complete successfully.

Windows Search Indexing Service

Tests have concluded that the Windows Search service, used to provide indexing for Windows Search, can interfere with Connect when installing on a virtual machine. If the installation hangs during the last steps, it is necessary to completely disable this service during installation.

- Click on Start, Run.
- Type in **services.msc** and click OK.
- Locate the **Windows Search** service and double-click on it.
- Change the **Startup Type** to **Disable**, and click **Stop** to stop the service.
- Try the installation again.
- Once completely, you may re-enable the service and start it.

Database Considerations

This page describes the different considerations and pre-requisites for the database backend used by PReS Connect, whether using the MySQL instance provided by the installer, or using your own.

Using the MySQL Instance from the Installer

The MySQL Instance we provide in the [Installation Wizard](#) is already pre-configured with specific options that we have determined are necessary for the most stable setup.

These are the specific options that have been changed in our version of my.ini:

- **max_connections = 200** : PReS Connect uses *a lot* of database connections. This number ensures that even in high volume environments, enough connections will be available.
- **max_allowed_packet = 500M** : In some implementations, especially using Capture OnTheGo, large packets will be necessary to transfer binary files. This maximum packet size ensures that the data received by PReS Connect can be stored in the database.
- **character-set-server = utf8 , collation-server = utf8_unicode_ci , default-character-set=utf8** : These indicate our database support for UTF-8/Unicode.

Using your own MySQL Instance

If you already have a MySQL server instance and wish to use it, the following should be taken into consideration:

- The MySQL account must have access to all permissions using the GRANT Command, including creating databases.
- The database configuration must include the options indicated in the above section.
- The SQL instance must be open to access from other computers. This means the bind-address option should not be set to 127.0.0.1 or localhost.

Network considerations

The following should be taken into consideration in regards to network settings and communications

- If a local proxy is configured (in the **Internet Explorer Options** dialog), the option **Bypass proxy server for local addresses** must be checked, or some features depending on local communication will not work.

Language and Encoding considerations

Please note the following considerations:

- **Language:**
 - PReS Connectis currently offered in 5 languages, between which you can switch in the Preferences dialog. These languages are: French, English, German, Japanese and Chinese (Traditional).
 - The PReS Connect help system (this document) is only available in English.
- **Encoding:**
 - Issues can sometimes be encountered in menus and templates when running PReS Connect on a non-English operating system. These are due to encoding issues and will be addressed in a later release.

Performance Considerations

This page is a comprehensive guide to getting the most performance out of your PReS Connect installation as well as rough guidelines indicating when it's best to upgrade.

Performance Analysis Details

In order to get the most out of your installation, it's important to analyze your needs. This ensures that you are already getting the maximum possible performance in your current setup, before looking into hardware upgrades or performance packs. These guidelines will be helpful in extracting all the juice you can.

- **Job Sizes and Speed:** In terms of pure output speed, it's important to first determine what job size is expected, and adjust Scheduling Preferences accordingly. The basic rule is:
 - If processing a small number of very large records (when each individual record is composed of a large number of pages), more instances with an equal amount of speed units is better. For hardware, RAM and Hard Drive speeds are most important, since the smallest divisible part (the record) cannot be split on multiple machines or even cores.
 - If creating a very large number of small records (hundreds of thousands of 2-3 page individual records, for instance), a smaller number of instances with a large number of speed packs is better. As for hardware, then the number of cores becomes critical, whereas RAM and hard drive are secondary. Performance Packs, as well as the MySQL instance being separate, would be helpful if your most powerful machine starts struggling.
 - You can mix and match, such as one instance prioritized for large jobs and the rest for smaller, quicker jobs. Or the contrary. Or, whatever you want, really.
- **RAM Configuration:** By default, each instance of the Merge Engine and Weaver Engine is set to use 640MB of RAM. This means that regardless of speed units, if not enough memory is available, output speed might not be the one you expect. Assuming that the machine itself is not running any other software, the rule of thumb is the following: The total number of used memory in the machine should be pretty much the maximum available (around 95%). For each engine, it's necessary to modify the .ini file that controls its JAVA arguments. Edit the :
 - For the Merge Engine, see C:\Program Files\Objectif Lune\OL Connect\MergeEngine\Mergeengine.ini
 - For the Weaver Engine, see C:\Program Files\Objectif Lune\OL Connect\weaverengine\Weaverengine.ini
 - The parameters are -Xms640m for the minimum RAM size, -Xmx640m for the maximum RAM size. Explaining Java arguments is beyond the scope of this document. Please read references [here](#), [here](#) and [here](#) for more details (fair warning: these can get pretty technical!).

- **Template and data mapping optimization:** Some functionality offered by the Designer modules are very useful, and sometimes downright awesome, but can cause the generation of records and of contents items to slow down due to their nature. Here are some of them:
 - **Preprocessor and Postprocessor scripts:** manipulating data using a script may cause delays before and after the data mapping action has actually taken place, especially file conversion and data enrichment from other sources.
 - **Loading external and network resources:** In Designer, using images, javascript or css resources located on a slow network or on a slow internet connection will obviously lead to a loss of speed. While we do our best for caching, a document with 100,000 records which queries a page that takes 1 second to return a different image each time will, naturally, slow output generation down by up to 27 hours.
 - **External JavaScript Libraries:** While loading a single javascript library from the web is generally very fast (and only done once for the record set), actually running a script on each generated page can take some time. Because yes, JavaScript will run for each record, and often take the same time for each record.
 - **Inefficient Selectors:** Using very precise ID selectors in script wizards can be much faster than using a text selector, especially on very large documents. (more details on this in another upcoming page).
 - **Complex Scripts:** Custom scripts with large, complex or non-optimized loops can lead to slowing down content creation. While it is sometimes difficult to troubleshoot, there are many resources online to help learn about JavaScript performance and coding mistakes. [Here](#), [here](#), and [here](#) are a few. Note that most resources on the web are about JavaScript in the *browser*, but the greatest majority of the tips do, indeed, apply to scripts in general, wherever they are used.

High-Performance Server Hardware

The following is suggested especially for high requirement server where speed is important. Before looking into a Performance Packs to enhance performance, ensure that the below requirements are met.

- **A physical, non-virtualized server.** ESX and VMWare servers are great for reducing the numbers of physical machines in your IT office, but they share all their hardware between each other. While you can create a virtual machine that seems as powerful as a physical one but it will still share between machines, and this will affect performance. It's a little like having a power bar plugged into a wall socket: you're not multiplying the power that's available, you're splitting it.
- **MySQL Database on a separate machine.** MySQL's main possible bottleneck is file I/O, and as such a high-performance setup will require this server to be on a separate machine, ideally with a high-performance, low-latency hard drive (a Solid State Drive, or SSD, will do wonderfully for this).

- **High-Quality 16+ GB Ram.** This is especially true when working with many server instances ("speed units") running in parallel. The more parallel processing, the more RAM is recommended.
- **4 or 8 physical cores.** We're not talking Hyper-Threading here, but physical cores. Hyper-Threading is great with small applications, but the overhead of "switching" between the virtual cores, and the fact that, well, they're virtual, means the performance is much lesser on high-power applications such as OL Connect. In short, a dual-core processor with Hyper-Threading enabled is not equivalent to a quad-core processor.

Installation and Activation

This section provides detailed information about the installation and activation of PReS Connect 1.3.0.

PReS Connect 1.3.0 is comprised of 2 different installers: one for the PReS Connect software and the other for PReS Workflow 8.

Where to Obtain the Installers:

The installers for PReS Connect 1.3.0 and PReS Workflow 8 can be obtained on DVD or downloaded as follows:

- If you are a **Customer**, the installers can be downloaded from the Objectif Lune Web Activations page: <http://www.objectiflune.com/activations>
- If you are a **Reseller**, the installers can be downloaded from the Objectif Lune Partner Portal: <http://extranet.objectiflune.com/>

For information on licensing, please see [Activating your license](#).

Installation Pre-Requisites

- Make sure your system meets the [System requirements](#).
- Version 1.3.0 can be installed **under a regular user account with Administrator privileges**.
- You must install on an NTFS file system.
- In order to use the automation feature in Version 1.3.0, you need to install PReS Workflow 8. This can be installed on the same machine as an existing PlanetPress® Suite 7.6 installation or on a new computer. For more information, please see [Information about PReS Workflow 8](#).
- As with any JAVA application, the more RAM available, the faster the product will execute.

Updating to PReS Connect 1.2 via the Update Manager

In order for users of PReS Connect 1.1 to upgrade to PReS Connect 1.2 via the Update Manager it is necessary to install version 1.1.8 of the Objectif Lune Update Client.

If you do not have this installed already, the next time you run your Update Client it will show that there is an update available of itself to Version 1.1.8.

Simply click on the download button in the dialog to install the new version of the Update Client. Note that it is no problem to run the update while the Client is open. It will automatically update itself.

Once you have done this, PReS Connect 1.2 will become available for download.

From PReS Connect Version 1.2 onwards, the new version of the Update Client is included by default with the setups.

Installing PReS Connect on Machines without Internet Access

In order to install PReS Connect it is necessary for the GoDaddy Root Certificate Authority to be installed (G2 Certificate) on the host machine and for this to be verified online. When a machine hosting the installation does not have access to the Internet, the installation will fail because the verification cannot be performed. To solve this problem you must first ensure that all Windows updates have been installed on the host machine. You then need to complete the following steps:

1. Go to <https://certs.godaddy.com/repository> and download the following two certificates to copy to the offline machine:
 - GoDaddy Class 2 Certification Authority Root Certificate - G2 - the file is gdroot-g2.crt
 - GoDaddy Secure Server Certificate (Intermediate Certificate) - G2 - the file is gdig2.crt

2. Install the certificates: Right mouse click -> Install Certificate, and follow the steps through the subsequent wizard.
3. Now copy the PReS Connect installer to the offline machine and start the installation as normal

Installation Wizard

For the PReS™ Connect Installation Wizard, please [click here](#).

Starting the PReS Connect installer

The PReS Connect installer may be supplied as an ISO image or on a DVD:

- If an ISO image, either burn the ISO onto a DVD or unzip the contents to a folder (keeping the folder structure)
- If on a DVD, either insert the DVD and initiate the installation from there or copy the contents to a folder (keeping the folder structure)

You then need to navigate to the PReS_Connect_Setup_x64.exe or and double-click on it. After a while the Setup Wizard will appear to guide you through the installation steps.

Selecting the required components

After clicking the Next button, the components screen appears, where the different components of PReS Connect can be selected for installation. Currently, the following are available:

- **PReS Connect Designer:** The [Designer](#) module. It may be used as a standalone with no other installed modules, but it will not have certain capabilities such as automation and commingling.
- **PReS Connect Print Manager:** The [Print Manager](#) module, handling IPDS print output.
- **PReS Connect Server:** The Server back-end giving capabilities such as automation, commingling, picking. It saves all entities generated from the Automation module into a database for future use.
- **PReS Connect Server Extension:** A slave server for a PReS Connect Server module. When an extension is installed, it communicates with the master server and shares tasks. Only one Server or Server Extension can be installed per machine, not both.
- **MySQL Product:** The database used by the PReS Connect Engine to save its items. This item is optional if an existing MySQL server, either on the same computer or a separate server, is to be used.
- **Installation Path:** This is the location where modules are to be installed.

All instances of **PReS Connect Server** and **PReS Connect Server Extension** must use the same instances of MySQL. Although it is possible for each separate server installation to have its own MySQL instance, doing so will prevent the servers from functioning together in a [Server Clustering](#) setup. However, this instance can be on any server whether it is a Server (master) or Server Extension (slave) machine.

The installer also allows you to calculate how much disk space is required for installing the selected components and to see how much space is available:

- **Disk space required:** Displays the amount of space required on the disk by the selected components.
- **Disk space available on drive:** Displays the amount of space available for installation on the drive currently in the Installation Path.
- **Recalculate disk space:** Click to re-check available disk space. This is useful if space has been made available for the installation while the installer was open.
- **Source repository location:** Displays the path where the installation files are located. This can be a local drive, installation media, or a network path.

Selection Confirmation

The next screen simply confirms your selection. Click **Next** to start the installation.

End User License Agreement

The next screen displays the [End User License Agreement](#), which needs to be read and accepted before clicking **Next**.

MySQL Configuration

The **Default Database Configuration** screen only appears if the *MySQL Product* module was selected in the *Product Selection* screen. It defines the administrative password for the MySQL server as well as which port it uses for communication. Note that the installer will automatically configure the *Server* to use the supplied password and port.

- **MySQL user 'root' Password:** Enter the password for the 'root', or administration account, for the MySQL server. The password must be at least 8 characters long and contain at least one of each of the following: lower case character, upper case character, digit, punctuation character. When updating from an earlier version, you **must** enter the appropriate MySQL password or the update will fail. If the password is forgotten, the MySQL product must be uninstalled and its database deleted from disk before attempting to reinstall.
- **Confirm 'root' Password:** Re-enter to confirm the password. Both passwords must match for installation to continue.
- **TCP/IP Port Number:** The port on which MySQL will expect, and respond to, requests. A check is run to confirm whether the specified TCP\IP Port Number is available on the local machine. If it is already being used by another service (generally, an existing MySQL installation), the number is highlighted in red and a warning message is displayed at the top of the dialog.
- **Allow MySQL Server to accept non-local TCP connections:** Click to enable external access to the MySQL server. This is required if setting up clustering, or if you need to

access the MySQL Server from any other machine. It is also required if MySQL is on a separate machine than PReS Connect.

Note: The last option may represent a security risk if the machine is open to the internet. It is recommended to ensure your firewall blocks access to port 3306 from external requests!

The **Database Connection** screen appears if the MySQL Product module was not selected. It defines the necessary information required to connect to an existing database.

- **Database Type:** Select the database type to use for the PReS Connect Engine. Currently, only MySQL is supported.
- **Administrator Username:** Enter the username for a user with administrative rights on the database. Administrative rights are required since tables need to be created in the database. If accessing a database on a different machine, the server must also be able to accept non-local TCP connections, and the username must also be configured to accept remote connection. For example, the "root" MySQL user entered as root@-localhost is not allowed to connect from any other machine than the one where MySQL is installed.
- **Administrator Password:** Enter the password for the above user. You **must** enter the appropriate MySQL password or the installation or update will fail.
- **TCP/IP Port Number:** Enter the port on which the database server expects connections. For MySQL, this is **3306** by default.
- **Database Host Name:** Enter the existing database server's IP or host name
- **Server Schema/Table:** Enter the name of the MySQL database into which the tables will be created.
- **Test Connection:** Click to verify that the information provide above is valid by connecting to the database.

PReS Connect Server/Server Extension Configuration

The **Server Configuration** screen is where the *Server* or *Server Extension* component is configured.

- **Run Server as:** Defines the machine username and password that the **PReS Connect Server** module's service uses. This account should be administrator on the local machine. Note that the [Server Security Settings](#) dialog can only be executed from the user specified here.
 - **Username:** The username the service uses to login. If the machine is on a domain, use the format domain\username and your domain password.
 - **Password:** The password for the set username.
 - **Validate user:** Click to verify that the entered username and password is correct and the service is able to login. This button *must* be clicked and the user validated for the **Next** button to be available.

The Master Server Connection section only appears when installing the PReS Connect Server Extension module. It defines the settings used to connect to the master server (PReS Connect Server module):

- **Hostname:** Enter the machine name or IP Address where the OL Connect Server resides.
- **Port:** Enter the port to use to communicate with the OL Connect Server. *Default: 9340*
- **Use server authentication:** Check this option to use authentication if the server expects it.
- **Username:** Enter the username expected by the OL Connect Server.
- **Password:** Enter the password expected by the OL Connect Server for the above username.
- **Validate Connection:** Click to verify that the entered username and password is correct and the service is able to login. This button *must* be clicked and the user validated for the **Next** button to be available.

Click **Next** to start the actual installation process. This process can take a few minutes.

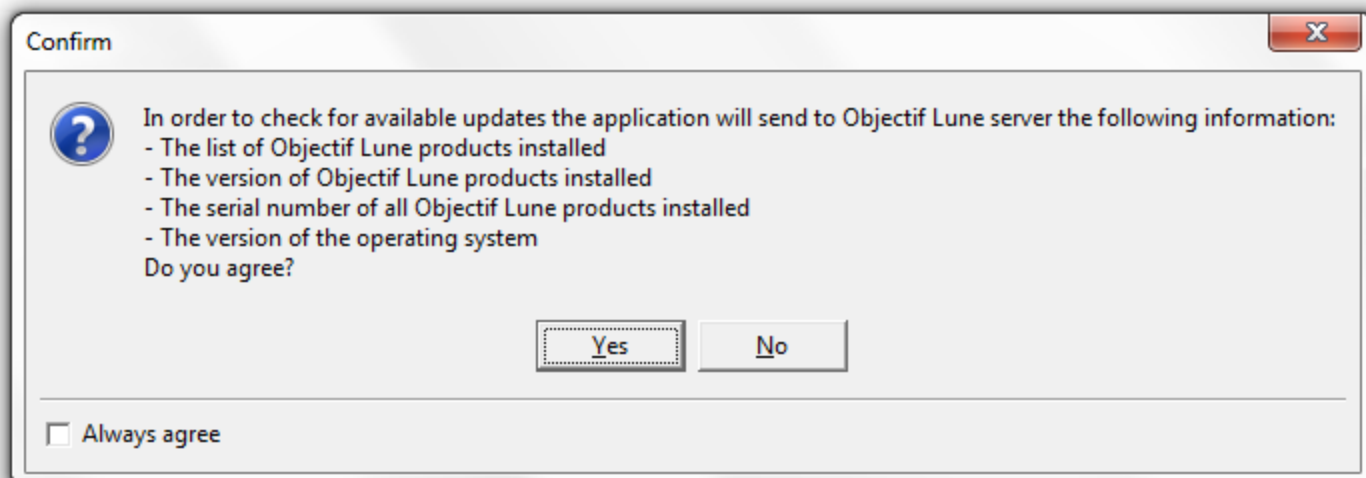
Completing the installation

This screen describes a summary of the components that have been installed.

- **Configure Update Check:** Check this option to display the **Product Update Manager** after the installation is complete. This allows you to configure your installation to regularly check for updates to which you are entitled on the Objectif Lune Update Manager. Note that this checkbox may not be available in the event that an issue was encountered during the installation.
- **Show Log...** : If an issue was encountered during the installation, click this button to obtain details. This information can then be provided to Objectif Lune for troubleshooting.
- When you are ready click the “Finish” button to close the installation wizard, and, if selected, to initialise the Product Update Manager.

The Product Update Manager

If the **Configure Update Check** option has been selected, the following message will be displayed when you click “Finish” in the setup:



Click “Yes” to install or open the Product Update Manager where the frequency with which the updates can be checked and a proxy server (if required) is specified. Note that if the Product Update Manager is already installed from another Objectif Lune application, it will be updated to the latest version and will retain any settings that were previously specified.

Select the desired options and then click **OK** to query the server and obtain a list of any updates that are available for your software.

- Note that the Product Update Manager can also be called from the “Objectif Lune Update Client” option in the Start menu.
- It can be uninstalled via Control Panel | Programs | Programs and Features.

Product Activation

After installation, it is necessary to activate the software. See [Activating your license](#) for more information.

Before activating the software, please wait 5 minutes for the database to initialize. If the software is activated and the services rebooted too quickly, the database can become corrupted and require a re-installation.

Information about PReS Workflow 8

If you wish to use PReS Workflow (automation) in conjunction with PReS Connect, you will need to install PReS Workflow 8 onto the same machine. Workflow 8 is provided through a separate installer which is available on CD or for download as follows:

- If you are a **Customer**, the installer can be downloaded from the Objectif Lune Web Activations page: <http://www.objectiflune.com/activations>
- If you are a **Reseller**, the installer can be downloaded from the Objectif Lune Partner Portal: <http://extranet.objectiflune.com/>

PReS Workflow 8 can be installed in parallel on the same machine as an existing PlanetPress® Suite 7.x installation. Note however:

- If both versions need to be hosted on the same machine, PReS Workflow 8 should always be installed after the legacy PlanetPress® Suite 7.x installation.
- When uninstalling PReS Workflow 8, you may be prompted to repair your legacy PlanetPress® Suite 7.x installation.
- If PReS Workflow 8 has been installed alongside PlanetPress® Suite 7, Capture can no longer be used with Workflow 7. The plugins are now registered uniquely to Workflow 8 and the messenger for Workflow 7 is taken offline. It is only then possible to use Capture from PReS Workflow 8.
- PReS Workflow 8 and PlanetPress® Workflow 7 cannot run simultaneously, since only one version of the Messenger service can run at a time. In fact, no 2 versions of PlanetPress Workflow can on the same machine simultaneously, whatever version is installed.
- It is possible to switch between different versions running by shutting down one version's services and then starting the other. However, this is not recommended. There are no technical limitations that prevent processes from previous PlanetPress Workflow versions (as far back as Version 4) to run on PReS Workflow 8, removing the need to run both versions.

For more information on the licensing of Workflow 8, please see [Activating your license](#).

Activating a License

PReS Connect and PReS Workflow 8 include separate 30 day trial periods during which it is not necessary to have a license for reviewing basic functionality. If you need an extension to the trial periods or require a license for specific functionality or plugins (e.g., the PReS Plugin for Workflow 8), you will need to request a new activation code.

Obtaining the PReS Connect Magic Number

To obtain an activation file, you first need to retrieve the OL™ Magic Number. The Magic Number is a machine-specific code that is generated based on the computer's hardware and software using a top-secret Objectif Lune family recipe. Each physical computer or virtual computer should have a different Magic Number, thus require a separate license file to be functional.

To get the PReS Connect Magic Number, open the PReS Connect Designer application:

- Open the **Start Menu**
- Click on **All Programs**, then **Objectif Lune**, then **PReS Connect**
- Open the **PReS Connect Designer [version]** shortcut.
- When the application opens, if it has never been activated or the activation has expired, the **Software Activation** dialog appears:
 - **License Information section:**
 - **Magic Number:** Displays the PReS Connect Magic Number.
 - **Copy to Clipboard:** Click to copy the Magic Number to your clipboard. It can then be pasted in the activation request email using CTRL+V.
 - **Licensed Products section:**
 - **Name:** Displays the name of the application or module relevant to this activation.
 - **Serial Number:** Displays the activation serial number if the product has been activated in the past.
 - **Expiration Date:** Displays the date when the activation will expire (or the current date if the product is not activated)
 - **Web Activations:** Click to be taken to the online activation page (not yet functional).
 - **End-User License Agreement** (Appears only when loading a license file):
 - **License:** This box displays the EULA. Please note that this agreement is legally binding.
 - **I agree:** Select to accept the EULA. You must select this option to install the license.
 - **I don't agree:** Select if you do not accept the EULA. You cannot install the license if this option is selected.
 - **Load License File:** Click to browse to the .olconnectlicense file once you receive it.

- **Install License:** Click to install the license and activate the software (only available when a license file is loaded).
- **Close:** Click to cancel this dialog. If a license file has been loaded, it will not automatically be installed.

The **Software Activation** dialog can also be reached through a shortcut located in **All Programs**, then **Objectif Lune**, then **PReS Connect** and is named **Software Activation**. Since it does not load the software, it is faster to access for the initial activation.

Requesting a license

After getting the Magic Number, a license request must be done for both PReS Connect and Workflow 8:

- If you are a **Customer**, you must submit your Magic Number and serial number to Objectif Lune via the Web Activations page: <http://www.objectiflune.com/activations>. The OL™ Customer Care team will then email the PReS Connect license file to you.
- If you are a **Reseller**, you can create an evaluation license via the the Objectif Lune Partner Portal by following the instructions there: <http://extranet.objectiflune.com/>

Note that if you do not have a serial number, one will be issued to you by the OL Activations team.

Accepting the license will activate it, after which the PReS Connect services will need to be restarted. Note that in some case the service may not restart on its own. To resolve this issue, restart the computer, or start the service manually from the computer's Control Panel.

Activating PReS Workflow 8

PReS Workflow 8 uses the same licensing scheme as PReS Connect. There are 2 ways of activating the license for Workflow 8 after you have saved it to a suitable location:

- If you only have PReS Workflow 8 installed you can double-click on the license for the PReS Workflow 8 License Activation dialog to open. Applying the license here allows you to activate all of the required Workflow 8 components.
- If you have both PReS Workflow 8 and PReS Connect installed, it will not be possible to double-click on the license file as this will always open the PReS Connect Activations Tool. Instead you must open PReS Workflow 8 manually and apply the license through its activations dialog.

Activating PReS Connect

To activate PReS Connect, simply save the license file somewhere on your computer where you can easily find it, such as on your desktop. You can then load the license by double-clicking on it, or through the start menu:

- Open the **Start Menu**
- Click on **All Programs**, then **Objectif Lune**, then **PReS Connect**
- Open the **PReS Connect Designer [version]** shortcut. The “PReS Connect Software Activation” tool displays information about the license and the [End-User License Agreement](#) (EULA).
- Click the **Load License File** button.
- Read the EULA and click I agree option to accept it.
- Click **Install License** to activate the license. The license will then be registered on the computer and you will be able to start using the software.

After installation message will appear warning that the Server services will need to be restarted. Just click OK to proceed.

Migrating to a new computer

Currently there are no special migration tools to move data from one PReS Connect installation to another. Instructions for migration will be available for later versions of the software.

User accounts and security

Permissions for PReS Connect Designer

PReS Connect Designer does not require any special permissions to run besides a regular program. It does not require administrative rights and only needs permission to read/write in any folder where Templates or Data Mapping Configurations are located.

If generating Print output, PReS Connect Designer requires permission on the printer or printer queue to send files.

Permissions for PReS Connect Server

The PReS Connect Server module, used by the *Automation* module, requires some special permissions to run. These permissions are set during installation, in the *Engine Configuration* section of the [Installation Wizard](#), but it can also be configured later by modifying permissions for the service. To do this:

- In Windows, open the Control Panel, Administrative Tools, then Services (this may depend on your operating system).
- Locate the service called `Serverengine_UUID`, where UUID is a series of characters that depend on the machine where the software is installed.
- Right-click on the service and select *Properties*.
- In the *Connection* tab, define the account name and password that the service should use. This can be a local account on the computer or an account on a Windows Domain. The account must have administrative access on the machine. It should also correspond to the user account set up in *PReS Workflow*.

Legal Notices and Acknowledgements

PReS Connect, Copyright © 2015, Objectif Lune Inc. All rights reserved.

The license agreements for the associated open source third party components can be downloaded [here](#).

This application uses the following third party components:

- **Apache Javascript Support (Rhino) version 1.7.3** which is licensed under the terms of the Mozilla License Version 1.1. The source code can be obtained from the following location: <https://developer.mozilla.org/en-US/docs/RhinoDownload?redirect=no>
- **Adobe PDF Library** which is either a registered trademark or trademark of Adobe Systems Incorporated in the United States and/or other countries.
- **Adobe XMP Core** Copyright © 1999 - 2010, Adobe Systems Incorporated. All rights reserved.
- **Eclipse Persistence Services Project (EclipseLink)**, Copyright © 2007, Eclipse Foundation, Inc. and its licensors. All rights reserved. This is distributed under the terms of the Eclipse Public License Version 1.0 and Eclipse Distribution License Version 1.0.
- **Fugue Icons** by [Yusuke Kamiyamane](#) which are distributed under the terms of the [Creative Commons Attribution 3.0 License](#).
- **Gecko** which is distributed under the terms of the Mozilla Public License Version 2.0. Information on obtaining Gecko can be found on the following page: https://wiki.mozilla.org/Gecko:Getting_Started
- **Glassfish Java Mail** which is licensed under the terms of the Common Development and Distribution License (CDDL) Version 1.0. Information on how to download the Glassfish source can be obtained from here: <https://wiki.sls.oracle.com/display/GlassFish/Java+EE+7+Maven+Coordinates>
- **Hamcrest Matchers** Copyright © 2000-2006, www.hamcrest.org. All rights reserved.
- **HyperSQL**, Copyright © 2001-2010, The HSQL Development Group. All rights reserved.
- **ICU4J 4.4.2** Copyright © 1995-2013 International Business Machines Corporation and others. All rights reserved.
- **Jacob Java Com Bridge** which is licensed under the terms of the GNU Lesser General Public License Version 2. The source code for this can be obtained from the following location: <http://sourceforge.net/projects/jacob-project/files/jacob-project/>
- **JavaCraft JSch** Copyright © 2002 - 2012 Atsuhiko Yamanaka, JCraft Inc. All rights reserved.
- **JavaSysMon** Copyright © 2009 ThoughtWorks, Inc. All rights reserved.
- **JavaX Mail** which is distributed under the terms of the Common Development and Distribution License (CDDL) Version 1.1. The source code for this can be obtained from the following location: <https://java.net/projects/javamail/downloads/directory/source>
- **Jersey** which is distributed under the terms of the Common Development and Distribution License (CDDL) Version 1.1. Information on how to obtain the source code

can be found at the following location: <http://repo1.maven.org/maven2/org/glassfish/jersey/jersey-bom>

- **jersey-json-1.13** which is licensed under the terms of the Common Development and Distribution License (CDDL) Version 1.1. Information on how to obtain the source code can be found at the following location: <http://mvnrepository.com/artifact/com.sun.jersey/jersey-json/1.13-b01>
- **Jersey Multipart** which is distributed under the terms of the Common Development and Distribution License (CDDL) Version 1.1. Information on how to obtain the source code can be found at the following location: <http://repo1.maven.org/maven2/org/glassfish/jersey/jersey-bom>
- **JGoodies Forms, JGoodies Binding and JGoodies Looks**, Copyright © 2002-2013 JGoodies Software GmbH. All rights reserved.
- **JNA Version 3.5.1** which is distributed under the terms of the GNU Lesser General Public License Version 2.1. The source code for this can be obtained from the following location: <https://github.com/twall/jna/releases>
- **Junit** which is distributed under the terms of the Eclipse Public License Version 1.0. The source code for Junit can be obtained from the following location: <https://github.com/junit-team/junit/tree/master/src>
- **Mimepull** which is distributed under the terms of the Common Development and Distribution License (CDDL) Version 1.1. The source code for this can be obtained from the following location: <https://maven.java.net/content/repositories/releases/org/jvnet/mimepull/mimepull/>
- **Objectweb ASM**, Copyright © 2000-2011 INRIA, France Telecom. All rights reserved.
- **Relique CSV Driver** which is licensed under the terms of the Lesser General Public License Version 2.0. This can be obtained from the following location: <http://sourceforge.net/p/csvjdbc/code/ci/master/tree/>
- **Rhino 1.6R7 and 1.7R2** which are licensed under the terms of the Mozilla License Version 1.1. The source code for this can be obtained from the following location: <https://developer.mozilla.org/en-US/docs/RhinoDownload?redirect=no>
- **Saxon** which is distributed under the terms of the Mozilla Public License Version 2.0. The source code for this can be obtained from the following location: <http://sourceforge.net/projects/saxon/files/Saxon-HE/9.6/>
- **Servlet API** developed by Sun as part of the Glassfish project and licensed under the terms of the Common Development and Distribution License (CDDL) Version 1.0. Information on how to download the Glassfish source (as part of Java EE platform) can be obtained from here: <https://wiki.oracle.com/display/GlassFish/Java+EE+7+Maven+Coordinates>
- **Spring Framework** which is distributed under the terms of the Apache Software License Version 2.0. This product includes subcomponents with separate copyright notices and license terms.
- **Springsource JavaX Mail** which is distributed under the terms of the Common Development and Distribution License (CDDL) Version 1.0. The source code for this can be obtained from the following location: <http://ebr.s->

[pring-](#)
[source.-](#)

com/repository/app/bundle/version/detail?name=com.springsource.javax.mail&version=1.4.

- **Springsource SLF4J 1.6.1**, Copyright © 2004-2008 QOS.ch. All rights reserved.
- **Web Services Description Language for Java** which is distributed under the terms of the Common Public License v 1.0. The source code for this can be obtained from the following location: <http://wsdl4j.cvs.sourceforge.net/viewvc/wsdl4j/>
- **XULRunner** which is distributed under the terms of the Mozilla Public License Version 2.0. The source code for this can be obtained from the following location: <http://ftp.mozilla.org/pub/mozilla.org/xulrunner/releases/latest/source/>
- **zzilib** which is licensed under the terms of the Mozilla License Version 1.1. The source code for this can be obtained from the following location: <http://sourceforge.net/projects/zzilib/files/zzilib13/>
- **7-Zip SFX** which is licensed under the terms of the GNU Lesser General Public License Version 2.1. The source code for this can be obtained from the following location: http://www.7zsfx.info/files/7zsd_src_160_2712.7z

Portions of certain libraries included in this application which are distributed under the terms of the Mozilla Public License have been modified. To obtain copies of the modified libraries please contact your local Objective Lune Support team.

This application also uses the following components which are distributed under the terms of the **Apache Software License Version 2.0**:

- Apache Ant
- Apache Axis
- Apache CFX
- Apache Commons Beanutils
- Apache Commons CLI
- Apache Commons Codec
- Apache Commons Collections
- Apache Commons Configuration
- Apache Commons DBCP
- Apache Commons Discovery
- Apache Commons FileUpload
- Apache Commons Imaging
- Apache Commons IO
- Apache Commons Lang
- Apache Commons Logging
- Apache Commons Net
- Apache Commons Pool
- Apache Commons VFS
- Apache Derby
- Apache Felix and dependencies
- Apache Geronimo
- Apache Jakarta HttpClient

- Apache Log4j
- Apache Neethi
- Apache OpenCMIS
- Apache POI
- Apache ServiceMix
- Apache Tomcat
- Apache WSS4J
- Apache Xalan
- Apache Xerces2 Java Parser
- Apache XMLGraphics
- Apache XML-RPC
- Barcode4j
- Google Collections
- Google GSON
- Jetty
- LMAX Disruptor
- OPS4J Pax Web
- org.json.simple
- Spring Dynamic Modules
- StAX
- XMLBeans

Eclipse Technology:

This Software includes unmodified Eclipse redistributables, which are available at www.eclipse.org. The Eclipse redistributables are distributed under the terms of the Eclipse Public License - v 1.0 that can be found at <https://www.eclipse.org/legal/epl-v10.html>.

VSS Java FreeMarker:

This product includes software developed by the Visigoth Software Society (<http://www.visigoths.org/>).

This includes the following subcomponents that are licensed by the Apache Software Foundation under the Apache License, Version 2.0:

- freemarker/ext/jsp/web-app_2_2.dtd
- freemarker/ext/jsp/web-app_2_3.dtd
- freemarker/ext/jsp/web-app_2_4.xsd
- freemarker/ext/jsp/web-app_2_5.xsd
- freemarker/ext/jsp/web-jsptaglibrary_1_1.dtd
- freemarker/ext/jsp/web-jsptaglibrary_1_2.dtd
- freemarker/ext/jsp/web-jsptaglibrary_2_0.xsd
- freemarker/ext/jsp/web-jsptaglibrary_2_1.xsd

Java Advanced Imaging:

This application uses Java Advanced Imaging which is part of the Java SE framework and platform and which is distributed under the terms of the Oracle Binary Code License Agreement for the Java SE Platform Products and Java FX. Copyright 2013, Oracle America, Inc. All rights reserved. Use is subject to license terms. ORACLE and JAVA trademarks and all ORACLE- and JAVA-related trademarks, service marks, logos and other brand designations are trademarks or registered trademarks of Oracle in the U.S. and other countries.

Further Components:

- This product includes software developed by the **JDOM Project** (<http://www.jdom.org/>).
- Portions of this software are copyright © 2010 **The FreeType Project** (www.freetype.org). All rights reserved.
- This product includes software developed by **JSON.org** (<http://www.json.org/java/index.html>).

[Click to download the EULA as PDF](#)