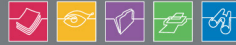




OBJECTIF LUNE

PLANETPRESS.  
SUITE



[www.objectiflune.com](http://www.objectiflune.com)

**PLANETPRESS.**  
 **SUITE**

---

**How to allow PlanetPress Suite to communicate together across the network when using Microsoft Firewall.**





OBJECTIF LUNE

PLANETPRESS.  
SUITE



[www.objectiflune.com](http://www.objectiflune.com)



## PlanetPress Suite Messenger

PlanetPress Suite uses a special service component, hereby referred to as "Messenger" (do not confuse with Windows Messenger or MSN Messenger) to allow products of PlanetPress Suite to work together across the network. For example, Messenger is used to know which product is installed on which computer, send documents from PlanetPress to PlanetPress Watch, etc. Note that the Usage column represents the various modules within Messenger, not separate programs.

We are officially registered with **IANA (Internet Assigned Numbers Authority)**:

<http://www.iana.org/assignments/port-numbers>

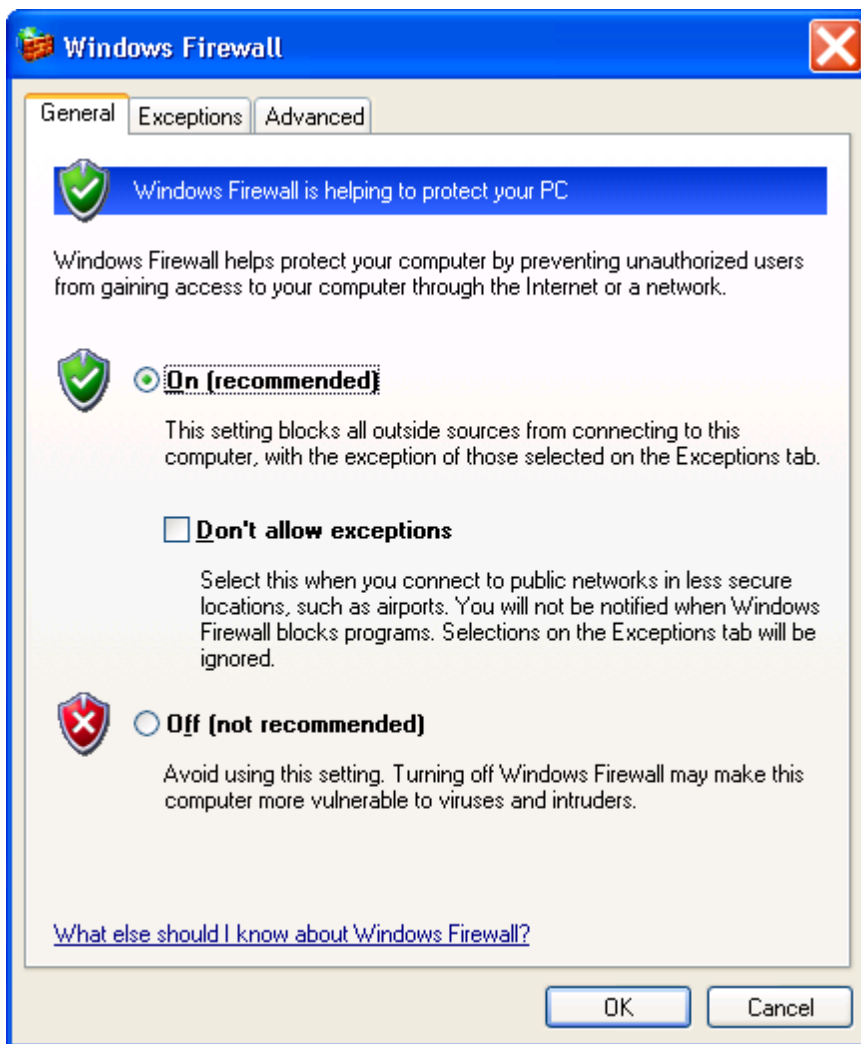
<u>Usage</u>	<u>Protocol</u>	<u>Local Port</u>	<u>Remote Port</u>
File transfer server (documents, jobs, etc)	TCP	5863 (listening port)	N/A
Product discovery (server)	UDP	5863 (listening port)(2)	N/A
File transfer client (documents, jobs, etc)	TCP	default(1)	5863
Product discovery (client)	UDP	default(1)(2)	5863

## Configuration

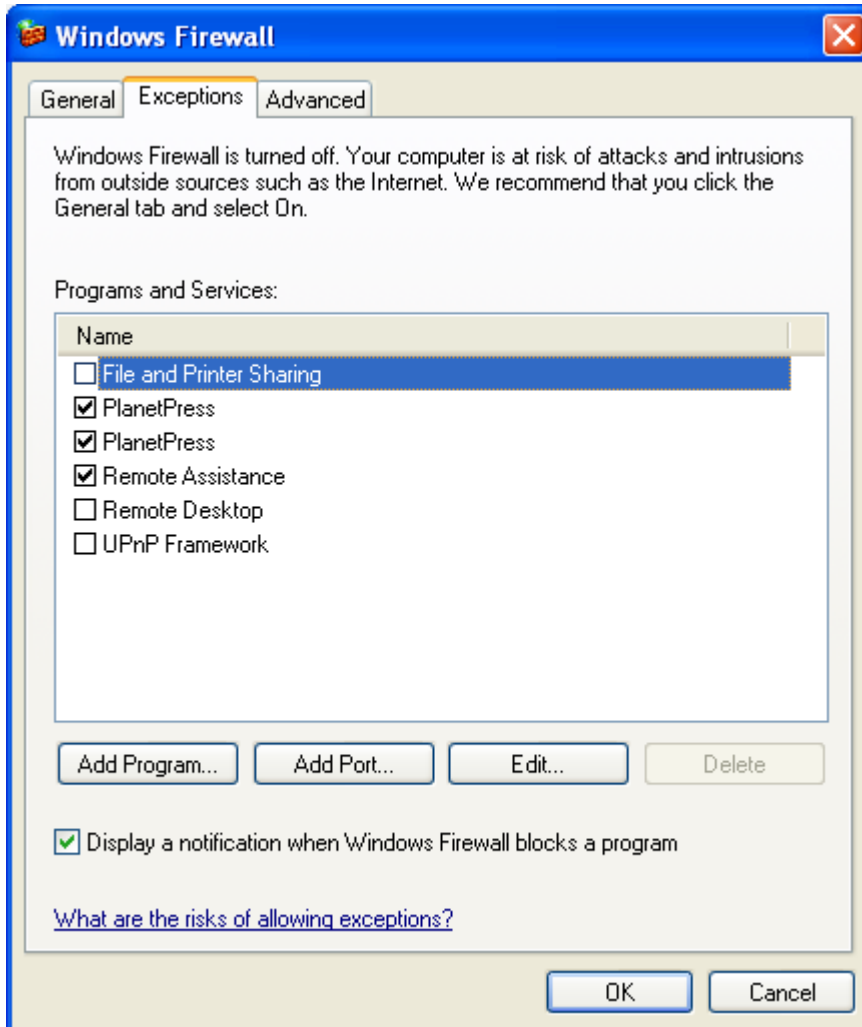
If you are under Windows XP and you are using Microsoft Firewall, this may cause some conflicts when trying to communicate between any of the PlanetPress Suite products, if Microsoft Firewall is not properly configured.

In order for products within the PlanetPress Suite to communicate together, when using Microsoft Firewall, you need to give exception to the PlanetPress Suite Messenger port, which is port 5863.

Under Control Panel, Double click on Microsoft Firewall, the following screen will appear.

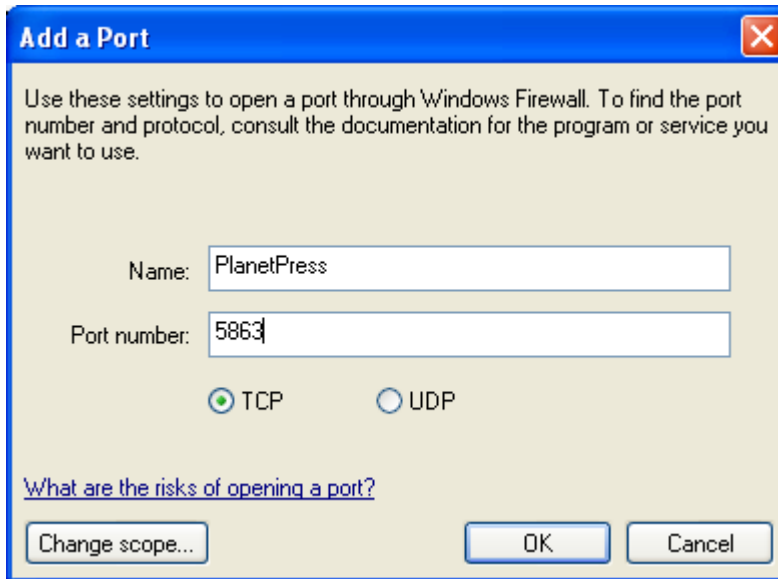


Click on the Exception Tab and select the Add Port button.



The following window will appear where it will allow you to add the Name and Port Number. In this case we will use Port number 5863, which is the remote port number for PlanetPress Suite Messenger. As for the name, you can simply enter a name that describes the Service program. It is recommended to add the Name and Port Number for both protocols (TCP and UDP).

TCP



**Add a Port**

Use these settings to open a port through Windows Firewall. To find the port number and protocol, consult the documentation for the program or service you want to use.

Name: PlanetPress

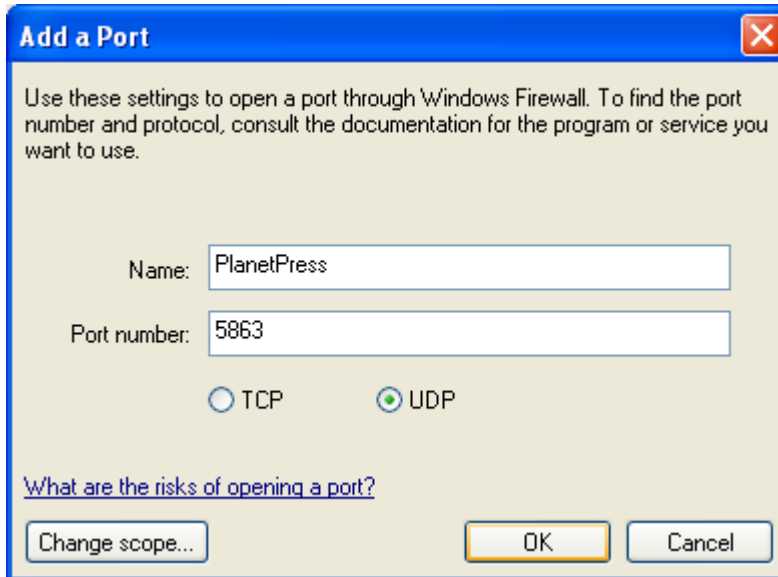
Port number: 5863

TCP  UDP

[What are the risks of opening a port?](#)

Change scope... OK Cancel

UDP



**Add a Port**

Use these settings to open a port through Windows Firewall. To find the port number and protocol, consult the documentation for the program or service you want to use.

Name: PlanetPress

Port number: 5863

TCP  UDP

[What are the risks of opening a port?](#)

Change scope... OK Cancel

After you press on the OK button, the name of the service (program description "PlanetPress") will appear checked as seen on the screen shot above called "Windows Firewall".

**\*\*\*Note \*\*\***

Remember that PlanetPress Messenger should be started in order to communicate between the PlanetPress Suite Services (Programs).